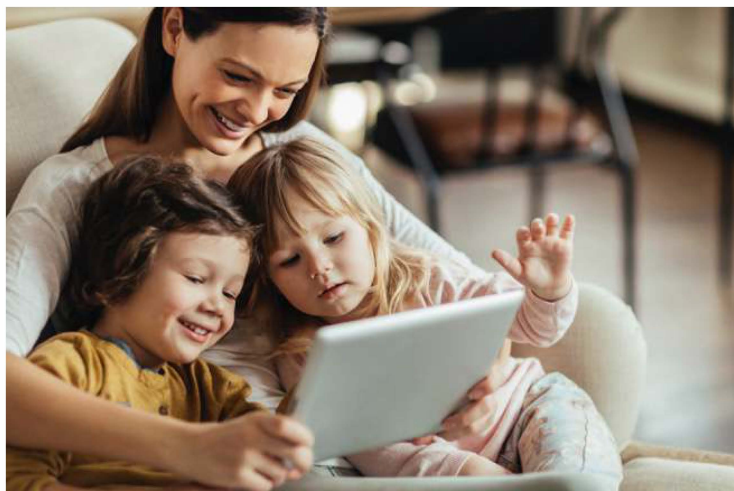


Managed Wi-Fi



(360) 264-2915

Predictable Wi-Fi performance

We provide carrier class Wi-Fi for connectivity throughout all areas of your home/business.

Flexibility to meet your growing needs

If your Wi-Fi coverage needs grow, we can add Wi-Fi access points.

Cloud based management

Firmware is automatically updated and issues can be remotely diagnosed and resolved.

Worry free installation

We will install and optimize your wireless network, ensuring your router and access points are placed in an area which will give you the most effective connection to the wireless devices you use.

Device connection assistance

We provide help setting up and configuring devices like computers, tablets, smartphones, smart TVs, and gaming consoles.

Managed Wi-Fi services available with any of our internet packages:	INCLUDED?	
	YES	NO
On-site Wi-Fi analysis to determine optimal installation*	✓	
Preliminary assessment of infrastructure required to provide internet service to your router	✓	
Initial installation and setup of leased router and satellites (as needed)	✓	
Assistance with initial connection of customer owned equipment and devices	✓	
Maintenance of leased router including firmware updates	✓	
Assistance with connecting new and additional devices	✓	
Assistance with connection problems related to authentication issues	✓	
Assistance with issues related to Wi-Fi signal strength and quality	✓	
Replacement of defective router, if necessary	✓	
Relocation of leased router (for an additional charge)	✓	
Issues related to customer neglect or damage to leased router		✓
Issues related specifically to customer owned network equipment or devices		✓

* On-site Wi-Fi analysis fee of \$95 is waived with a 12 month Managed Wi-Fi service commitment. Available to Tenino Telephone Company customers only.